

Barnea truncata

Angel wings



CONICET
CENPAT

MARINE-COASTAL EXOTIC SPECIES GUIDE FOR ARGENTINA

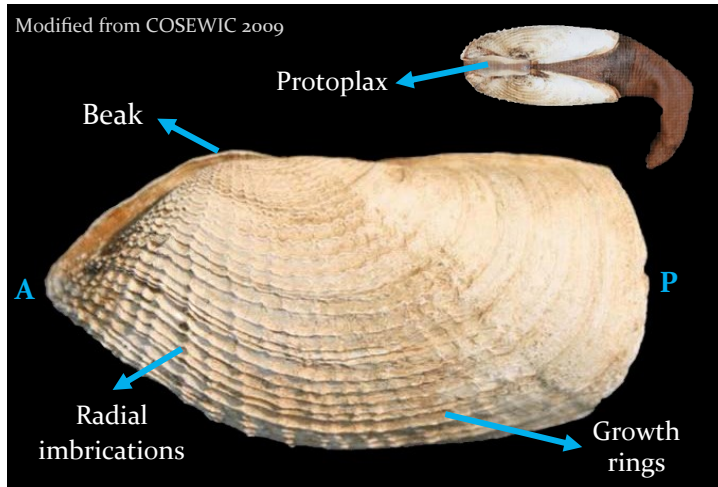
DESCRIPTION

- Light grey to white, long fragile valves. Beak close to the anterior (A) third of valve.
- It presents growth rings and radial imbrications that turn weaker to the posterior (P) end of valves.
- The dorsal anterior (A) end of the valve is protected by the protoplax, a diagnostic character. In this species, the protoplax has parallel sides and lack lobes.



Photo: Alejandro Bortolus

Modified from COSEWIC 2009



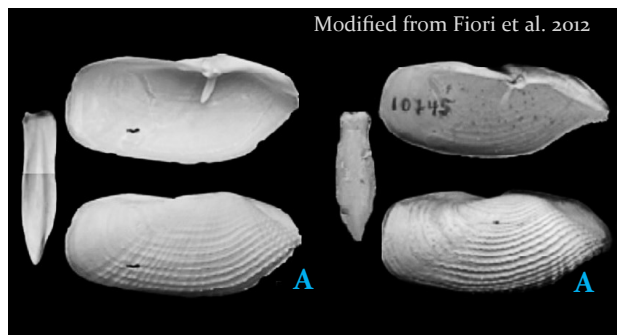
Length: 3-5 cm

HABITAT

Intertidal mollusk with the soft parts of its body partially covered by its valves. It buries itself in fine firm sediments to refuge away from predators. It has two long siphons used to filter sea water during high tides for breathing and feeding.

MARINE-COASTAL EXOTIC SPECIES GUIDE FOR ARGENTINA

Barnea truncata - Angel wings



Barnea truncata

Barnea lamellosa

SIMILAR SPECIES

Barnea lamellosa: Native. Beak close to the middle of valve. Protoplax with lanceolate shape and two lobes. The anterior margin of the valve is projected forward.

INVASIVE STATUS

Barnea truncata is found along the Atlantic coast of USA and Canada. Isolated populations have been reported from Mexico, Colombia, Guyana and Sepetiba Bay (Brasil, 21° S). In Argentina, it was first registered in 2009 in Bahía Blanca port (39° S), where it seems to be confined since then.

IMPACT ON NATIVE COMMUNITIES

There are no studies about *Barnea truncata* in Argentina. However, the empty valves can remain long periods buried in the sand and among rocks in large amounts, probably acting as refuge and substrate for other estuarine organisms as it happens with the valves of the intertidal razor clam *Tagelus plebeius*.

CONTACT US

This guide has been developed by the Grupo de Ecología en Ambientes Costeros (GEAC), from CENPAT (CONICET). If you find this species outside the reported areas, please contact us and let us know the date, locality, approximate number of individuals and, if possible, send us a picture:

 especiesexoticasarg@gmail.com

 Grupo de Ecología en Ambientes Costeros (GEAC)